



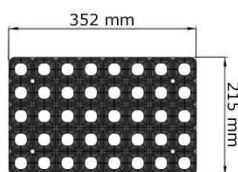
Growing Trays – Ref. 40 A



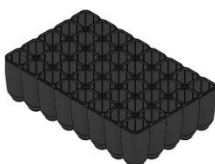
Perspective View



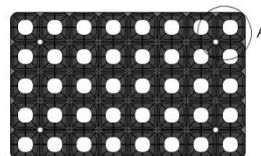
Detail



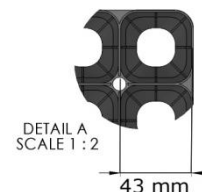
Top View



Technical Drawings



Top View



DETAIL A
SCALE 1 : 2

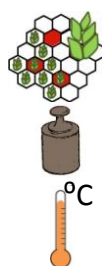
43 mm



Characteristics

Dimensions:

- height: 93mm
- length: 352mm
- width: 215mm



Plants by m²: 531
 Volume/cell: 125cm³
 Weight: 0,533Kg
 Color: black (for other colors, contact us)
 Warranty: 5 years
 Temperature (sterilization): until 130°C

Application



FORESTRY – FRUITCULTURE – ORNAMENTAL
 Eucalyptus (seed or stake) and Pine

More Information:



Transport



Quantity / Palet (Container): 680
 Quantity / Palet (Truck)¹: 731

¹ - For trucks with 2,30 m height