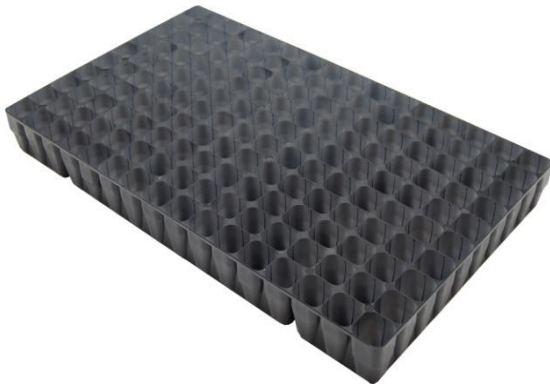




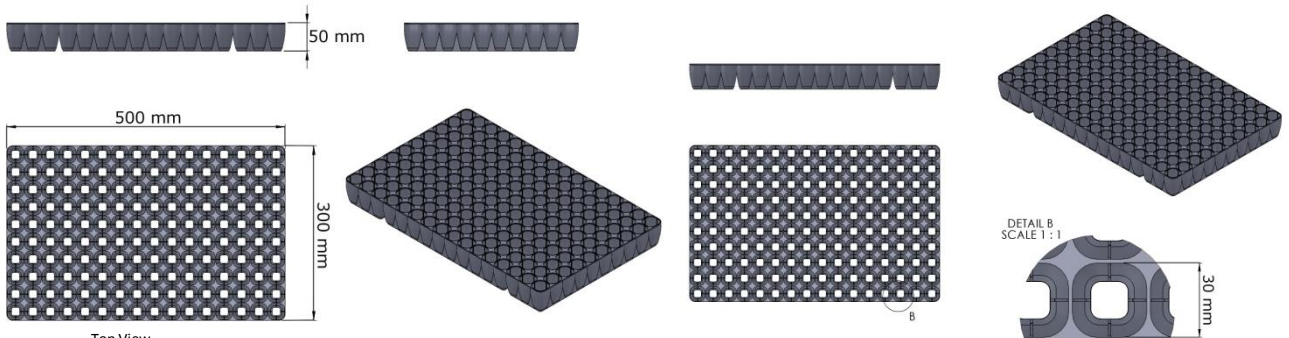
Growing Trays – Ref. 160



Perspective View



Detail



Top View

Technical Drawings

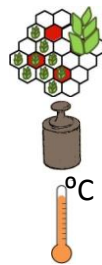
DETAIL B
SCALE 1 : 1

30 mm

Characteristics

Dimensions:

- height: 50mm
- length: 500mm
- width: 300mm



Plants by m²: 1056
 Volume/cell: 32 cm³
 Weight: 0,794kg
 Color: black (for other colors, contact us)
 Warranty: 5 years
 Temperature (sterilization): until 130°C

Application



HORTICULTURE – FLORICULTURE – STAKE ROOTING

Industrial tomato, Cabbage, Green pepper,
 Cutting olives and Cutting ornamentals

More Information:



Transport



Quantity / Palet (Container): 320
 Quantity / Palet (Truck)¹: 344

¹ - For trucks with 2,30 m height